

Population Health Trust Advisory Committee Meeting

Skagit County Board of Health
June 4th, 2015



Skagit County Board of Health - Population Health Trust

"Always working for a safer and healthier Skagit County"

*Kenneth A. Dahlstedt, Chair
Lisa Janicki, Commissioner
Ron Wesen, Commissioner*

Agenda

- Introduction, Agenda, Notes
- Steering Report - Pending
- Update on Business Sub Committee
- Update on Contributions
- Survey Report and Help with Distribution
- Bill Henkel - Forces of Change
- Jennifer Johnson - Forces of Change
- Data Indicators
- Summary, next steps and closing



Skagit County Board of Health - Population Health Trust

"Always working for a safer and healthier Skagit County"

*Kenneth A. Dahlstedt, Chair
Lisa Janicki, Commissioner
Ron Wesen, Commissioner*

Introductions

- Please Welcome
 - Karen Wanek, Skagit College
 - Chris Johnston, Peace Health
 - Yeshi Tulu, Skagit Public Health
- Please Provide Name
- Sector you Represent



Skagit County Board of Health - Population Health Trust

"Always working for a safer and healthier Skagit County"

*Kenneth A. Dahlstedt, Chair
Lisa Janicki, Commissioner
Ron Wesen, Commissioner*

Steering Committee Report - Kari Ranten

- Suggested that a short survey be sent to all members about Contributions and inquire if people need additional help or information
- Further endorsed exploring the Business Sub Committee
- Bill Henkel and Community Action will provide in-kind support to manage paper distribution of survey
- Discussed means to increase Forces of Change presentations but decided on the status quo
- Started the conversation about Data Indicators but lots pending



Skagit County Board of Health - Population Health Trust

"Always working for a safer and healthier Skagit County"

*Kenneth A. Dahlstedt, Chair
Lisa Janicki, Commissioner
Ron Wesen, Commissioner*

Business Sub Committee Report

First Meeting is June 11th

Name	Work
Andrea Martin	Opus bank
Heather Hernandez	Skagit Publishing
Cheryl Bishop	Skagit Bank
Linda Fergusson	Burlington Chamber of Commerce
Don Wick	EDASC
Shirley Yap	Shell Corporation
Kim Ort	Shell Corporation
Anneleise Vance-Sherman	Regional Labor Economist at WA ESD



Skagit County Board of Health - Population Health Trust

"Always working for a safer and healthier Skagit County"

*Kenneth A. Dahlstedt, Chair
Lisa Janicki, Commissioner
Ron Wesen, Commissioner*

2015 Budget and Contribution Report

Pledged Contributions (6)	\$42,500
---------------------------	----------

Total 2015 Expected Cost	\$76,959
--------------------------	----------

Pending Gap	(\$34,459)
-------------	------------



Skagit County Board of Health - Population Health Trust

"Always working for a safer and healthier Skagit County"

*Kenneth A. Dahlstedt, Chair
Lisa Janicki, Commissioner
Ron Wesen, Commissioner*

Survey Sub Committee Report

- Thank our Survey Members: Connie Davis, Duncan West, Carol Hawk, Jenna Strand, Jennifer Johnson, Jennifer Sass-Walton, & Diane Smith
- Final Version Done
- Spanish next Monday, thanks to Bev Keyes
- Community Action Managing Paper Version
- Colleen Managing Spanish Paper Version
- Open June 22 – July 15



Skagit County Board of Health - Population Health Trust

"Always working for a safer and healthier Skagit County"

*Kenneth A. Dahlstedt, Chair
Lisa Janicki, Commissioner
Ron Wesen, Commissioner*

Survey Sub Committee Report

- Flyer to Announce – Ready in Packet
- Table Tents – Ready in Packet
- Newspaper ad from June 21-27
- Pending:
 - Link to PHT Web site?
 - Add link to your web site?
 - Create Master Email Distribution List



Skagit County Board of Health - Population Health Trust

"Always working for a safer and healthier Skagit County"

*Kenneth A. Dahlstedt, Chair
Lisa Janicki, Commissioner
Ron Wesen, Commissioner*

Social Services Community Action Change Presentation



Skagit County Board of Health - Population Health Trust

"Always working for a safer and healthier Skagit County"

*Kenneth A. Dahlstedt, Chair
Lisa Janicki, Commissioner
Ron Wesen, Commissioner*



15 Minutes



Skagit County Board of Health - Population Health Trust

"Always working for a safer and healthier Skagit County"

*Kenneth A. Dahlstedt, Chair
Lisa Janicki, Commissioner
Ron Wesen, Commissioner*

Government Public Health Forces of Change Presentation



Skagit County Board of Health - Population Health Trust

"Always working for a safer and healthier Skagit County"

*Kenneth A. Dahlstedt, Chair
Lisa Janicki, Commissioner
Ron Wesen, Commissioner*

Data Indicators

- **Contract with Snohomish in Process**
- **Contract with Epidemiologist Pending**
- **Data Carousel in Oct-Nov**
- **Pending: Review what data indicators are essential and determine what more do we want from each services sector**



Skagit County Board of Health - Population Health Trust

"Always working for a safer and healthier Skagit County"

*Kenneth A. Dahlstedt, Chair
Lisa Janicki, Commissioner
Ron Wesen, Commissioner*

Information

- [Benton Franklin Data Indicator Web site](#)
and invitation
- June 9th 4:00 6:00 pm Pasco, WA



Skagit County Board of Health - Population Health Trust

"Always working for a safer and healthier Skagit County"

*Kenneth A. Dahlstedt, Chair
Lisa Janicki, Commissioner
Ron Wesen, Commissioner*

Closing Remarks

- **Next meeting July 2nd**
- **Burlington Library**
- **Time: 9:00 to 12:00**



Skagit County Board of Health - Population Health Trust

"Always working for a safer and healthier Skagit County"

*Kenneth A. Dahlstedt, Chair
Lisa Janicki, Commissioner
Ron Wesen, Commissioner*

Community Action of Skagit County

Bill Henkel



Skagit County Board of Health - Population Health Trust

"Always working for a safer and healthier Skagit County"

*Kenneth A. Dahlstedt, Chair
Lisa Janicki, Commissioner
Ron Wesen, Commissioner*

Formative for me – feeling the force of community momentum

- Skagit Food Distribution Center



- Homeless Service Center
- BEST Place, Adult & Family Literacy



Skagit County Board of Health - Population Health Trust

"Always working for a safer and healthier Skagit County"

*Kenneth A. Dahlstedt, Chair
Lisa Janicki, Commissioner
Ron Wesen, Commissioner*

Who we are

- Private nonprofit serving Skagit since 1979 (network born in 1964)
- Our mission: to foster and advocate for self-sufficiency among low-income people in Skagit
- Our promise: “The heart of Community Action is creating a spirit of hope by helping people help themselves and each other.”
- Touching the lives of 1 in 4



Skagit County Board of Health - Population Health Trust

"Always working for a safer and healthier Skagit County"

*Kenneth A. Dahlstedt, Chair
Lisa Janicki, Commissioner
Ron Wesen, Commissioner*

Community Action's Historical Disconnect and our 50th Anniversary

- **Our charge:** “Change a Community’s attitudes and practices towards the poor”
- **Our reality:** Skagit’s “Best Kept Secret”



Skagit County Board of Health - Population Health Trust

“Always working for a safer and healthier Skagit County”

*Kenneth A. Dahlstedt, Chair
Lisa Janicki, Commissioner
Ron Wesen, Commissioner*

Forces of Change

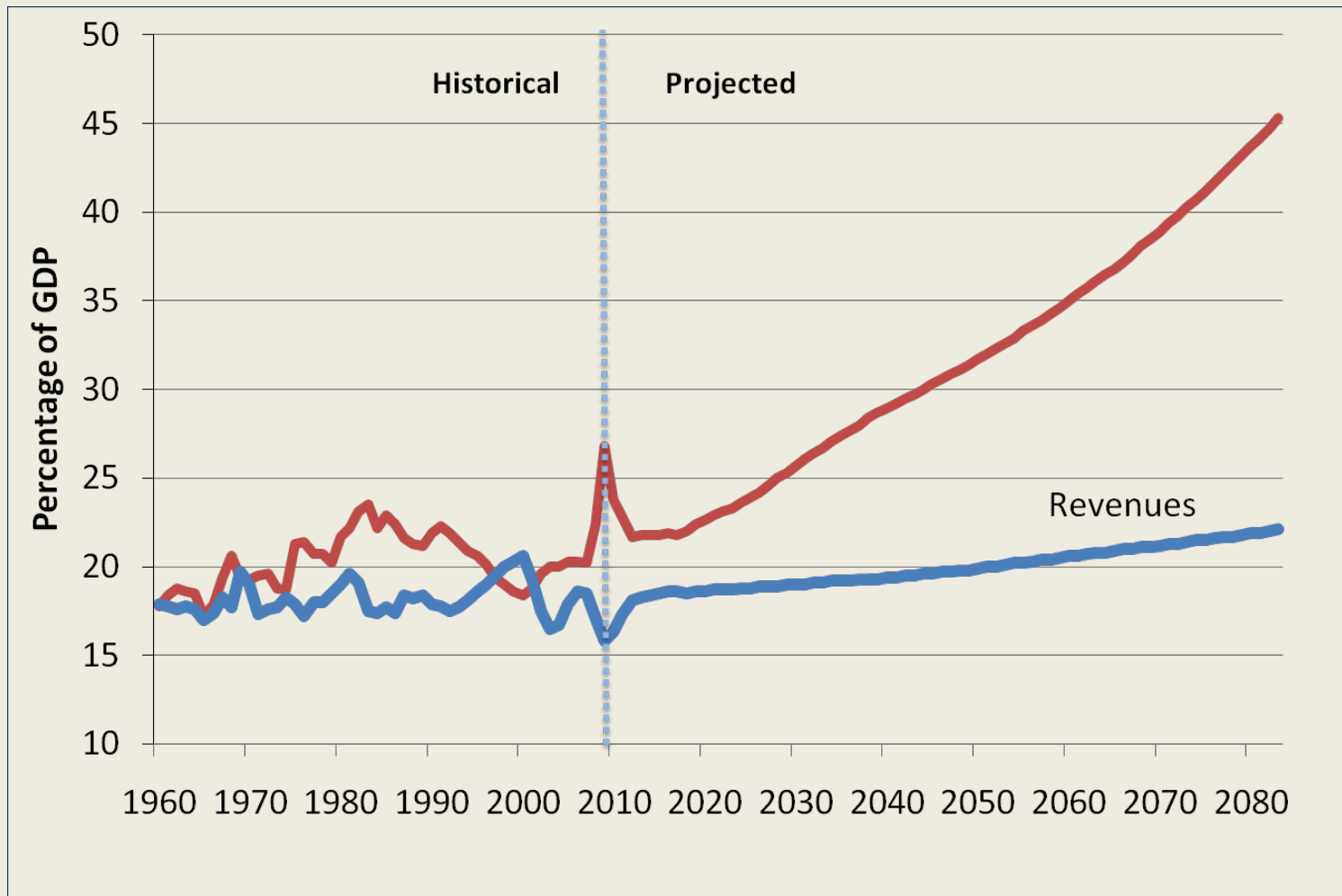
- Growing Income Inequality
- Changing Demographics
- Decreased resources, increased demand – and increased expectations
- O’Bama’s 1st State of the Union
- Projections on Rising Federal Deficit



Skagit County Board of Health - Population Health Trust

"Always working for a safer and healthier Skagit County"

*Kenneth A. Dahlstedt, Chair
Lisa Janicki, Commissioner
Ron Wesen, Commissioner*



“What are you going to do about it?”



Skagit County Board of Health - Population Health Trust

“Always working for a safer and healthier Skagit County”

*Kenneth A. Dahlstedt, Chair
Lisa Janicki, Commissioner
Ron Wesen, Commissioner*

Our Journey into Community

- “All hands on deck”
- WIPFLI Strategic Transformation Partnership – and staff team
- “Theory of Change” work with WA State Community Action Partnership

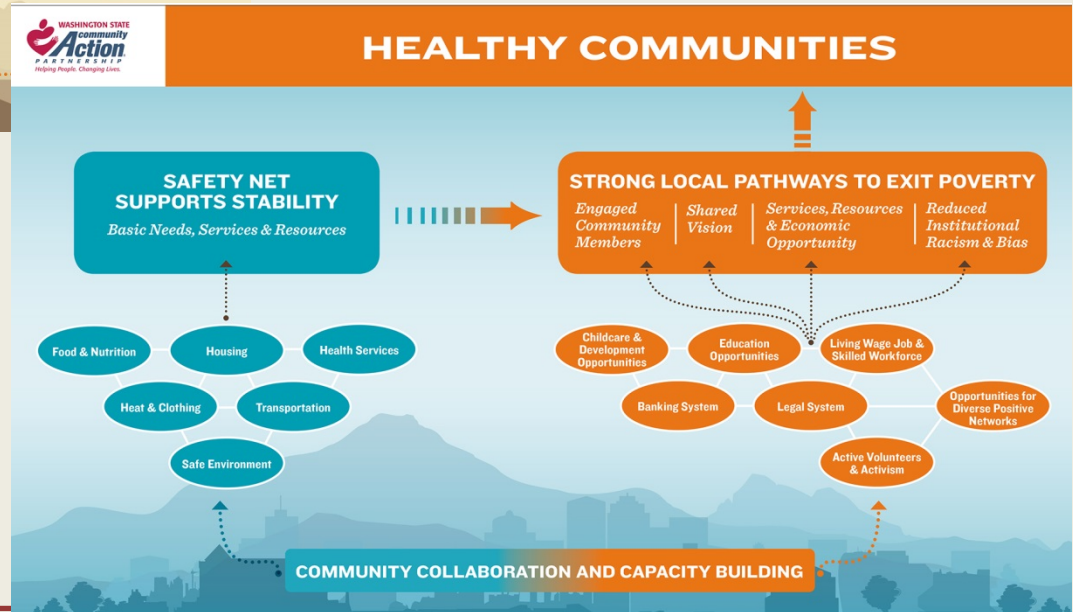
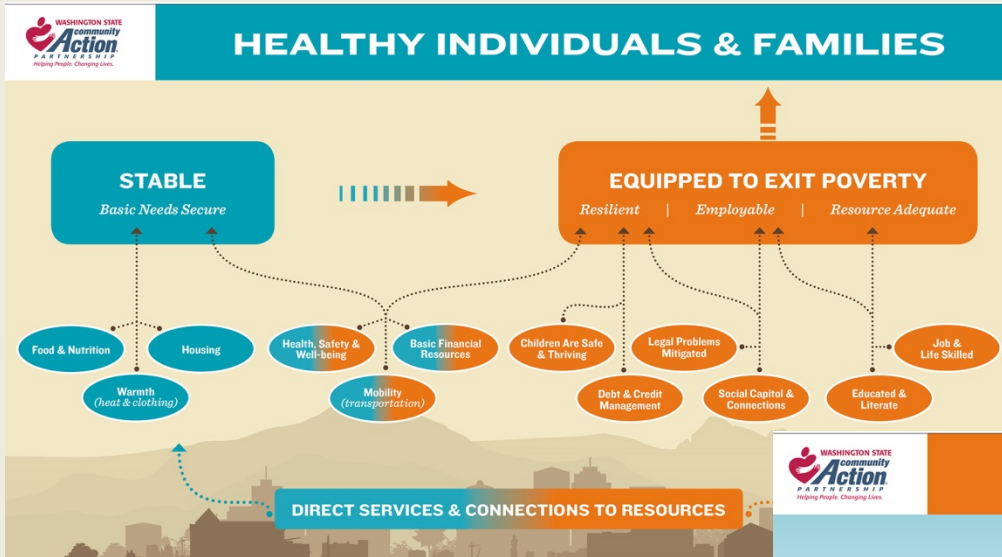


Skagit County Board of Health - Population Health Trust

“Always working for a safer and healthier Skagit County”

*Kenneth A. Dahlstedt, Chair
Lisa Janicki, Commissioner
Ron Wesen, Commissioner*

Theory of Change



Skagit County Board of Health - Population Health Trust

"Always working for a safer and healthier Skagit County"

Kenneth A. Dahlstedt, Chair
Lisa Janicki, Commissioner
Ron Wesen, Commissioner

Our Strategic Focus

- **Better Lives**
 - Stabilizing Lives
 - Equipping people for Success

2015 STRATEGIC PRIORITIES

1. Core Theme: **Better Lives**

OBJECTIVE: Stabilizing Lives

A. Food & Nutrition

Community Action will help lead the local hunger-response and food-support system from a focus on quantity to a focus on nutritional quality.

B. Building a Family's Basic Resources & Resiliency

Community Action will work in partnership with the families we serve to identify basic resources to help them increase their resiliency and meet their life goals.

C. Housing

Community Action will lead our community in developing an effective Coordinated Point of Entry system that makes a meaningful impact on local homelessness.

D. Health

Community Action will provide a central access point for people who need healthcare coverage, and provide a leadership role in adult dental access and the evolution of a local dental safety net.

OBJECTIVE: Equipping Families for Success

E. Employability.

Community Action will work in partnership with the people we serve to develop career plans, and begin, or further, their journey on a career pathway.

F. Education

Community Action will provide basic education for adults to increase their opportunities for a higher income, and facilitate transitions to post-secondary education, while building family stability so that their children can thrive in school and life.

G. Asset Building

Community Action will work with families to build assets, repair credit, manage their budgets, plan for their future, and find a financial home.

The heart of Community Action is creating a spirit of hope by helping people help themselves and each other.



Skagit County Board of Health - Population Health Trust

"Always working for a safer and healthier Skagit County"

*Kenneth A. Dahlstedt, Chair
Lisa Janicki, Commissioner
Ron Wesen, Commissioner*

Our Strategic Focus

- **Stronger Community**
 - Engaging people in our Mission
 - Partnering with Purpose

2. Core Theme: **Stronger Communities**

OBJECTIVE:

A. Coordination/Catalyst for Change

Community Action will take a leading role (or be a strong participant) in coalition planning and strategic partnerships that lead to significant community impact.

B. Engagement

Community Action will provide a dynamic path for community members to engage in our mission and expand their positive impact on Skagit County.



3. Core Theme: **High-Impact Organization**

OBJECTIVE:

A. Customer Focused

Community Action will emphasize high-quality, innovative service responsive to and informed by the voice of our customers and partners.

B. Engaged Workforce

Community Action will foster positive career and leadership development across our entire workforce.

C. Continuous Improvement

Community Action will develop and track key indicators of success to guide the continuous improvement of our work to stabilize lives, equip families for success and strengthen community.

D. Financial Health & Stability

In order to ensure high quality customer service, Community Action will maintain the financial health of our organization.



Skagit County Board of Health - Population Health Trust

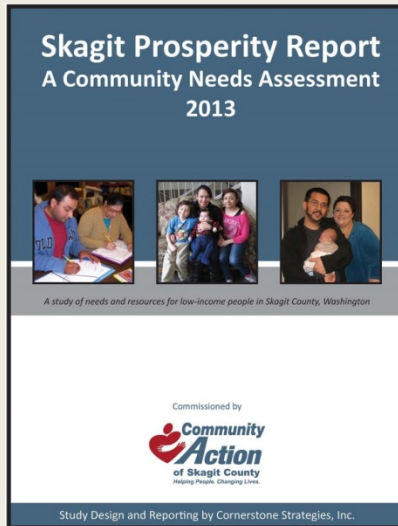
"Always working for a safer and healthier Skagit County"

*Kenneth A. Dahlstedt, Chair
Lisa Janicki, Commissioner
Ron Wesen, Commissioner*

Community Strengthening

Engaging people in our mission

Learn – Volunteer – Advocate – Give



Skagit County Board of Health - Population Health Trust

"Always working for a safer and healthier Skagit County"

*Kenneth A. Dahlstedt, Chair
Lisa Janicki, Commissioner
Ron Wesen, Commissioner*

Community Strengthening

Partnering with Purpose

- Common vision
- Shared metrics



Skagit County Board of Health - Population Health Trust

"Always working for a safer and healthier Skagit County"

*Kenneth A. Dahlstedt, Chair
Lisa Janicki, Commissioner
Ron Wesen, Commissioner*

Partnering with Purpose

– a few examples

- Food Distribution Center
- Housing Resource Center
- Affordable Housing
- Asset Building Coalition
- One Community One Voice
 - **And now Population Health Trust!**



Skagit County Board of Health - Population Health Trust

"Always working for a safer and healthier Skagit County"

*Kenneth A. Dahlstedt, Chair
Lisa Janicki, Commissioner
Ron Wesen, Commissioner*



Our Promise: “*The heart of Community Action is creating a spirit of hope by helping people help themselves and each other.”*

Our Guiding question: *What type of community do we want to see, and how can we work together to get there?*



Skagit County Board of Health - Population Health Trust

“Always working for a safer and healthier Skagit County”

*Kenneth A. Dahlstedt, Chair
Lisa Janicki, Commissioner
Ron Wesen, Commissioner*

Skagit County Public Health and Community Services

Forces of Change



Skagit County Board of Health - Population Health Trust

"Always working for a safer and healthier Skagit County"

*Kenneth A. Dahlstedt, Chair
Lisa Janicki, Commissioner
Ron Wesen, Commissioner*

PUBLIC HEALTH

Communicable Disease
Child and Family Health
Environmental Health
Correctional Health



Immunization
WIC Program
Nurse Family Partnership
Vital Statistics
Family Planning
STD Treatment
Tuberculosis Clinic
Food Safety
Drinking Water
On-Site Sewage
Solid & Hazardous Waste
Recreational Waters
Vector (dogs, cats and bats program)
Recreational Shellfish
Air Quality
Disease Surveillance
Emergency Preparedness
Outbreak Response



Skagit County Board of Health - Population Health Trust

"Always working for a safer and healthier Skagit County"

*Kenneth A. Dahlstedt, Chair
Lisa Janicki, Commissioner
Ron Wesen, Commissioner*

Community Services

Mental Health
 Substance Use Disorders
 Developmental Disabilities
 Housing Services
 Senior Services



Meals on Wheels
 Senior Center Program
 DD Employment Services
 DD Early Intervention Services
 School-Based Mental Health Program
 Treatment Courts
 Jail Transition Program
 Jail and Juvenile Detention MH Services
 Recovery Wellness Program
 Substance Abuse Treatment on Demand
 Residential Substance Abuse (jail)
 Crisis Triage Center (Lila Lane)
 REACH Recovery Center
 Youth Recovery Court
 Functional Family Therapy
 Transitions Step Down Housing
 Coordinated Homeless Entry Program
 Affordable Housing Coordination



Skagit County Board of Health - Population Health Trust

"Always working for a safer and healthier Skagit County"

*Kenneth A. Dahlstedt, Chair
 Lisa Janicki, Commissioner
 Ron Wesen, Commissioner*

Who Do We Serve?



Skagit County Board of Health - Population Health Trust

"Always working for a safer and healthier Skagit County"

*Kenneth A. Dahlstedt, Chair
Lisa Janicki, Commissioner
Ron Wesen, Commissioner*

Integration of Health and Community



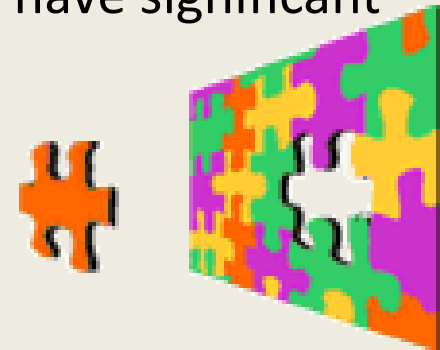
Skagit County Board of Health - Population Health Trust

"Always working for a safer and healthier Skagit County"

*Kenneth A. Dahlstedt, Chair
Lisa Janicki, Commissioner
Ron Wesen, Commissioner*

Skagit County takes a Holistic Approach to Health Improvement

- Health starts in our homes, schools, workplaces, neighborhoods, and communities.
- The conditions of which we live in impact health.
- Resources that enhance quality of life can have significant influence on health outcomes.
 - ✓ Housing
 - ✓ Community Planning
 - ✓ Education
 - ✓ Employment



part to whole



Skagit County Board of Health - Population Health Trust

"Always working for a safer and healthier Skagit County"

*Kenneth A. Dahlstedt, Chair
Lisa Janicki, Commissioner
Ron Wesen, Commissioner*

Health of our Community



Public Health and Homelessness

- ✓ Homelessness in the 21st century is an ongoing problem
- ✓ Homelessness impacts health
- ✓ Homelessness impacts utilization of high cost service systems
- ✓ Public Health professionals can improve outcomes with a holistic approach to health improvement

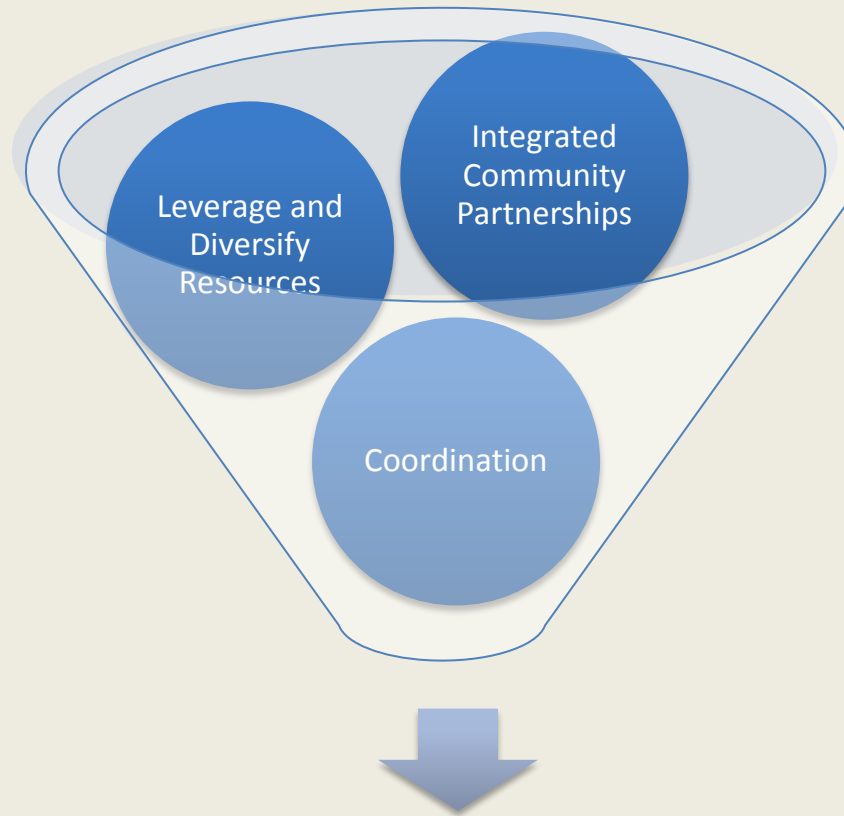


Skagit County Board of Health - Population Health Trust

"Always working for a safer and healthier Skagit County"

*Kenneth A. Dahlstedt, Chair
Lisa Janicki, Commissioner
Ron Wesen, Commissioner*

Combined Service Delivery Model



Improved Outcomes



Skagit County Board of Health - Population Health Trust

"Always working for a safer and healthier Skagit County"

*Kenneth A. Dahlstedt, Chair
Lisa Janicki, Commissioner
Ron Wesen, Commissioner*

Needle Exchange Program

- Needle Exchange and Disposal is an evidence based public health program designed to reduce the spread of HIV, Hepatitis C, and other blood-borne infections among people who inject drugs, their families and the larger community.
- The Needle Exchange program will routinely offer risk reduction counseling and referrals to substance abuse treatment, medical care and testing, STD treatment, and mental health counseling.



Skagit County Board of Health - Population Health Trust

"Always working for a safer and healthier Skagit County"

*Kenneth A. Dahlstedt, Chair
Lisa Janicki, Commissioner
Ron Wesen, Commissioner*

Drivers of Change



Affordable
Care Act –
Triple Aim



Washington
State Health
Improvement
Plan (HB-1518,
2572)



Accountable
Communities
of Health;
Regionalized
Focus



Behavioral
Health
Integration
(Mental Health
and Substance
Use Disorders)
2016



Full Health
Care
Integration
(Behavioral
Health and
Medical Care)
2020



Influential Events

- Communicable Disease Best Practices Analysis and Operational Assessment; Slalom Consulting
<http://www.skagitcounty.net/Departments/HealthDiseases/main.htm>
- Affordable Care Act
- Behavioral Health Integration 2016



Skagit County Board of Health - Population Health Trust

"Always working for a safer and healthier Skagit County"

*Kenneth A. Dahlstedt, Chair
Lisa Janicki, Commissioner
Ron Wesen, Commissioner*



Understand how state/federal law impacts mandated services



Align with changing federal and state policy related to health care

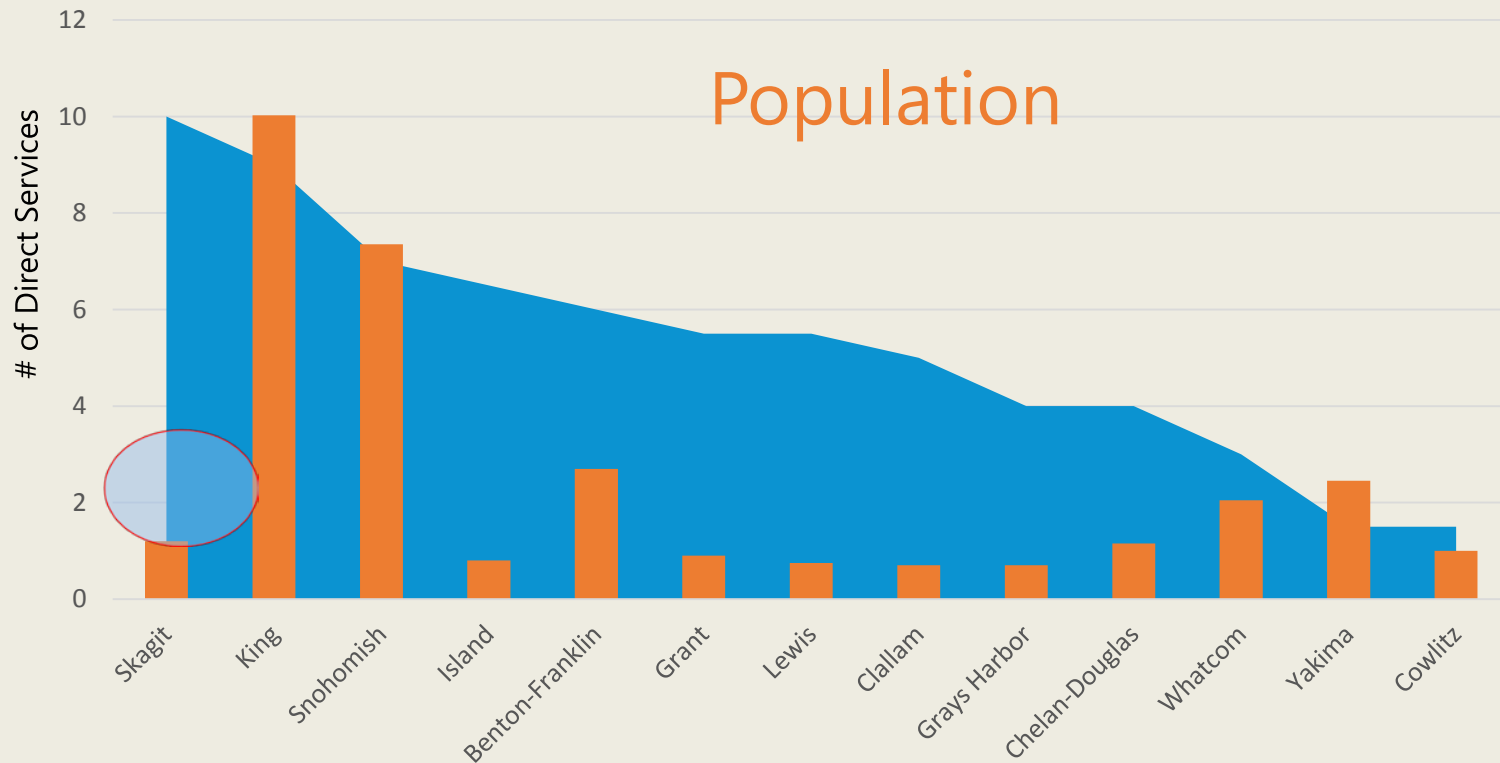


Learn what surrounding counties are doing to meet the needs of their population to identify best practices



Explore service offerings within Skagit County to ensure optimal alignment between the residents' needs and services offered

What Direct Services Are LHJs Providing?



Skagit County Board of Health - Population Health Trust

"Always working for a safer and healthier Skagit County"

*Kenneth A. Dahlstedt, Chair
Lisa Janicki, Commissioner
Ron Wesen, Commissioner*

Assessment Findings

The majority of LHJs no longer provide STD clinics (85%) or any family planning services (77%)

There is a statewide trend to reduce immunizations provided by LHJs

TB services have been scaled back within the past 10 to 15 years (69%), with a specific emphasis in latent TB (LTBI); 50% still do all TB services



Skagit County Board of Health - Population Health Trust

"Always working for a safer and healthier Skagit County"

*Kenneth A. Dahlstedt, Chair
Lisa Janicki, Commissioner
Ron Wesen, Commissioner*

Overall Org Design

- Development of a Community Health Action Plan
- Using data to inform what we do in the community

STD & Family Planning

- Family Planning clinic closed April 1, 2015
- Long term plans to phase out teen pregnancy outlying clinics operated by Public Health
- Enhance education and training

Immunizations

- Immunization clinics will be closed by July 2015
- Continue to provide VFC oversight
- Enhance education and training

Tuberculosis

- X-ray provided by Skagit Regional Health July 1, 2015
- PPD provided by community providers July 1, 2015
- Begin planning transition of LTBI (fall 2015)

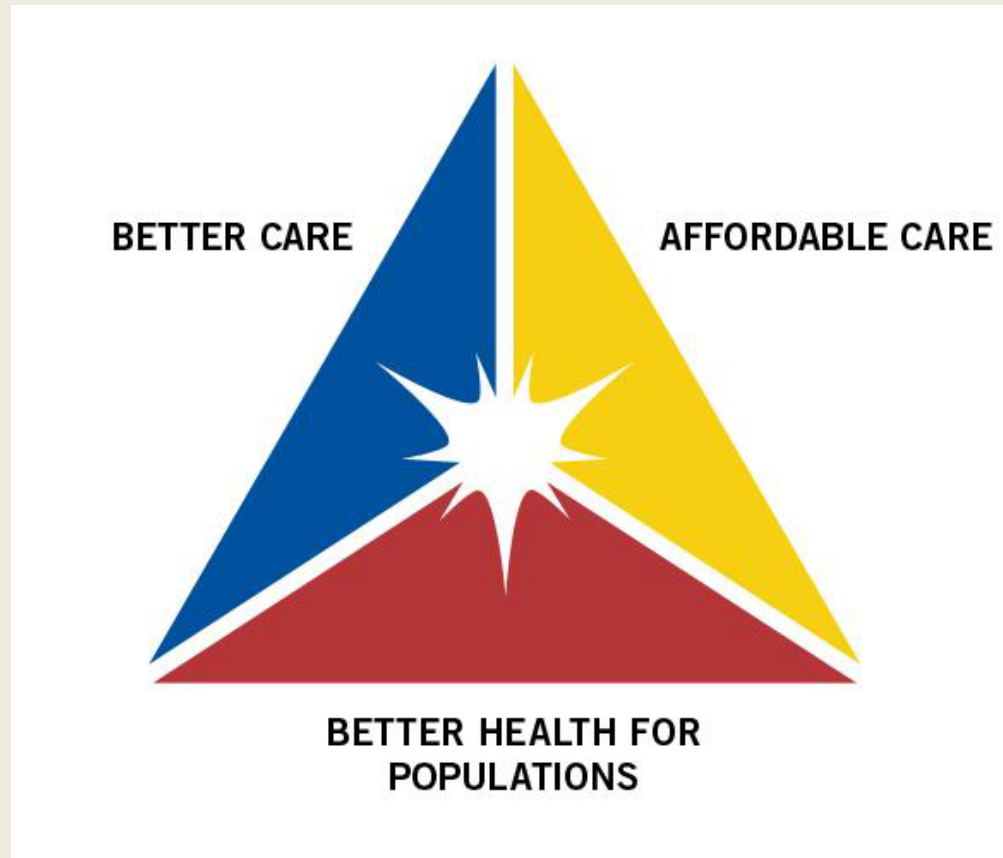


Skagit County Board of Health - Population Health Trust

"Always working for a safer and healthier Skagit County"

*Kenneth A. Dahlstedt, Chair
Lisa Janicki, Commissioner
Ron Wesen, Commissioner*

Affordable Care ACT - Triple AIM



Skagit County Board of Health - Population Health Trust

"Always working for a safer and healthier Skagit County"

*Kenneth A. Dahlstedt, Chair
Lisa Janicki, Commissioner
Ron Wesen, Commissioner*

Population Health – Why the buzz?



- Change in the focus from the individual level, a characteristic of mainstream medicine.
- Compliments the classic efforts of public health agencies by addressing a broader range of factors shown to impact the health of different populations.
- Reduce health inequities or disparities among different population groups due to, among other factors, social determinants of health.



Skagit County Board of Health - Population Health Trust

"Always working for a safer and healthier Skagit County"

*Kenneth A. Dahlstedt, Chair
Lisa Janicki, Commissioner
Ron Wesen, Commissioner*

Emerging Health System

Large newly
insured
populations

Incentives for
providers and
insurers to invest
in prevention,
immunizations,
medical homes

Increased
opportunities for
collaboration with
community and
healthcare
industry partners



Skagit County Board of Health - Population Health Trust

"Always working for a safer and healthier Skagit County"

*Kenneth A. Dahlstedt, Chair
Lisa Janicki, Commissioner
Ron Wesen, Commissioner*

Behavioral Health Integration

- Change in funding and contracting for substance use services
- Shift in behavioral health gaps and community needs
- Shift in .1% Sales Tax funding priorities
- Provider capacity and expertise



Skagit County Board of Health - Population Health Trust

"Always working for a safer and healthier Skagit County"

*Kenneth A. Dahlstedt, Chair
Lisa Janicki, Commissioner
Ron Wesen, Commissioner*

Public Health



Direct clinical services are widely available in the community

- Immunizations
- Family Planning
- Communicable Disease Treatment
- Behavioral Health Treatment



An intention to improve continuity of care for clients by encouraging them to get preventive care with a primary care provider



Budget reductions

- Consolidate Public Health and Human Service Programming
- Transition services to reflect changing health needs
- Refocus resources to serve larger groups of individuals



Skagit County Board of Health - Population Health Trust

"Always working for a safer and healthier Skagit County"

*Kenneth A. Dahlstedt, Chair
Lisa Janicki, Commissioner
Ron Wesen, Commissioner*

Public Health Trends

Emphasize role as
assurer, educator
and trainer of
public health vs.
provider

LHJs move away
from providing
direct services

Collaboration to
improve
outcomes



Skagit County Board of Health - Population Health Trust

"Always working for a safer and healthier Skagit County"

*Kenneth A. Dahlstedt, Chair
Lisa Janicki, Commissioner
Ron Wesen, Commissioner*

What is on the horizon?



Skagit County Board of Health - Population Health Trust

"Always working for a safer and healthier Skagit County"

*Kenneth A. Dahlstedt, Chair
Lisa Janicki, Commissioner
Ron Wesen, Commissioner*

FUTURE OF SKAGIT COUNTY PUBLIC HEALTH



Skagit County Board of Health - Population Health Trust

"Always working for a safer and healthier Skagit County"

*Kenneth A. Dahlstedt, Chair
Lisa Janicki, Commissioner
Ron Wesen, Commissioner*

Goal #1: Assurance

- ✓ Move to a supervisory and community engagement-based model to prevent disease and improve health.
 - ✓ Transition direct clinical services to community providers.
 - ✓ Continue to provide foundational public health services.
 - ✓ Strengthen education, training, and outreach for prevention, surveillance and services.
 - ✓ Enhance and engage in ongoing communication and relationship building to develop trust with local providers and clinics.
 - ✓ Enhance efforts to work with community providers and partners to start setting expectations and more collaborative relationships.
 - ✓ Enhance communication/marketing about what Public Health does.
-



Skagit County Board of Health - Population Health Trust

"Always working for a safer and healthier Skagit County"

*Kenneth A. Dahlstedt, Chair
Lisa Janicki, Commissioner
Ron Wesen, Commissioner*

Goal #2: Data Driven Decision Making

- ✓ Analysis and Assessment Focus.
- ✓ Expand Communicable Disease Division and develop an epidemiology program.
- ✓ Hire an epidemiologist.
- ✓ Public Health strategic plan alignment with Community Health Plan.
- ✓ Target education, training, and outreach for prevention and services based on data.



Skagit County Board of Health - Population Health Trust

"Always working for a safer and healthier Skagit County"

*Kenneth A. Dahlstedt, Chair
Lisa Janicki, Commissioner
Ron Wesen, Commissioner*

Goal #3: Population Health

- ✓ Provide leadership for Population Health Trust.
- ✓ Public Health alignment with community needs.
- ✓ Expand partnerships and leverage resources to improve outcomes.
- ✓ Alignment of county based strategies to achieve shared goals. Collective Impact.



Skagit County Board of Health - Population Health Trust

"Always working for a safer and healthier Skagit County"

*Kenneth A. Dahlstedt, Chair
Lisa Janicki, Commissioner
Ron Wesen, Commissioner*

Population Based Upstream Prevention



Skagit County Board of Health - Population Health Trust

"Always working for a safer and healthier Skagit County"

*Kenneth A. Dahlstedt, Chair
Lisa Janicki, Commissioner
Ron Wesen, Commissioner*

Public Health's Relationship with Population Health Trust

- Communicate
- Educate
- Train
- Collaborate
- Partner
- Assessment
- Alignment
- Collective Impact
- Upstream Prevention
- Leadership



Skagit County Board of Health - Population Health Trust

"Always working for a safer and healthier Skagit County"

*Kenneth A. Dahlstedt, Chair
Lisa Janicki, Commissioner
Ron Wesen, Commissioner*

Thank You

Jennifer Johnson, Director
Public Health and Community Services
700 South 2nd Street, Room 301
Mt Vernon, WA 98237
Office: 360.419.3432
jenniferj@co.skagit.wa.us



Skagit County Board of Health - Population Health Trust

"Always working for a safer and healthier Skagit County"

*Kenneth A. Dahlstedt, Chair
Lisa Janicki, Commissioner
Ron Wesen, Commissioner*